

LET US HELP YOU PUT THE PIECES TOGETHER



Online Symposium
The Power of PBLL
January 11 - 12, 2017 - FREE

In the world language classroom, PBLL offers a framework for designing powerful, culturally contextualized language learning experiences that support learners in using their language to address "real world" needs/purposes that are personally meaningful to them.

The Project-Based Language Learning (PBLL) Symposium will bring together language educators, policymakers, researchers, and innovators for conversations regarding the potential of PBLL to enhance and transform language education. This unique, FREE online event will provide attendees with a broad overview of PBLL, engaging interactions with world language teachers who have implemented PBLL in their classrooms, and the chance to network with professionals who are passionate about this topic. The symposium format makes it easy to integrate into busy schedules. Four interactive sessions are distributed across two days (i.e., two sessions per day).

Register today:

nflrc.hawaii.edu/events/symposium/



Online Institute
Fundamentals of PBLL
Starts January 22, 2017 - Registration: \$25

Embark on a journey of discovery in which you will learn more about the elements of high quality, rigorous Project-Based Language Learning (PBLL). During this year's online institute, you'll explore PBLL's connections with experiential learning, career pathways, 21st Century Skills, performance-based assessment, and your own instructional context. You will also connect with colleagues who have a common interest in quality PBLL implementation as experts in the field guide you through the creation of a project blueprint.

dive in

Complete Option 1 as part of a facilitated cohort or Option 2 via self-paced study. Registration for this online institute is \$25. Successfully complete all assigned tasks to earn an NFLRC Digital Badge, which qualifies you to apply for the NFLRC PBLL Intensive Summer Institute, Pathways to PBLL, offered in Honolulu in 2017. Stipends available for qualifying applicants.

More information:

nflrc.hawaii.edu/events/online-institute/



Intensive Summer Institute
Pathways to PBLL
July 2 - 9, 2017

Facilitators: Cherice Montgomery & Cindy Kendall

immerse yourself

Join us in exploring the use of Project-Based Language Learning (PBLL) as a framework for crafting compelling environments and experiences for language learners. During the NFLRC 2017 Intensive Summer Institute held in Hawai'i, inservice K-16 world language educators will learn how to orchestrate rich, experiential language learning opportunities that draw on a diverse array of disciplines and career pathways. After participating in an abbreviated, face-to-face, PBLL experience, each participant will design a well-scaffolded project for use in their own language classes. Join a team of experts with background in PBLL, language pedagogy, career and technical education, and assessment in redefining what it means to teach, transforming what it is possible for students to learn, and discovering how to craft more compelling lives for ourselves in the process!

*Please note: This is **not** a beginner's workshop. Applicants must first earn a digital badge from the 2017 Fundamentals of PBLL Online Institute as a prerequisite. Seats are limited and applications are competitive. Community college instructors interested in creating interdisciplinary connections will receive special consideration.*

nflrc.hawaii.edu/events/summer-institute/

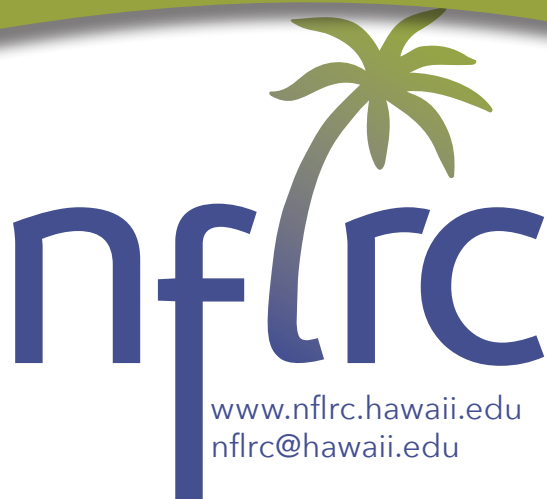


Cherice Montgomery is an assistant professor of Spanish at Brigham Young University and has expertise in project-based learning. She has been honored with several awards for excellence in teaching, including the Kansas Foreign Language Teacher of the Year Award. Her interests include creativity, design-based pedagogies, and experiential learning; mentoring, leadership, and change; pedagogy of professional development, 21st Century learning, and social technologies as pedagogical tools.



Cindy Kendall has an Ed.S. in Curriculum, Teaching, and Educational Policy from Michigan State University (MSU). She holds Michigan teacher and administrator certifications. She has held several roles in education, including classroom teacher, instructional technology coordinator, adjunct lecturer, and assistant superintendent. She is a frequent presenter at national, regional, and state conferences. Cindy has extensive experience helping teachers, administrators and other members of school communities integrate technology into teaching and learning and manage change initiatives.

Interested in PBLL? Come meet Cherice on Friday, 10:00am - 12:00pm at the NFLRC Booth (2528)



www.nflrc.hawaii.edu
nflrc@hawaii.edu

ACTFL 2016

HIGHLIGHTS

Visit us in the EXHIBIT HALL **BOOTH 2528**

Developing Materials for Online Language Learning

Fri, 11/18: 5:00 PM - 6:00 PM | Boston Conv. & Exhibition Center | Room 104A

Hui-Ya Chuang | Stephen Tschudi | Ruslan Suvorov | Ellen Hart

Online language learning requires specialized materials development for web-based delivery. Come learn about a series of professional development modules on this topic created by the Hawai'i National Foreign Language Resource Center and North Carolina Virtual Public Schools as an open educational resource for online language teachers.

Building Literacies through Project-Based Language Learning

Sat, 11/19: 8:00 AM - 9:00 AM | Westin Boston Waterfront | Hale Room

Rachel Mamiya Hernandez

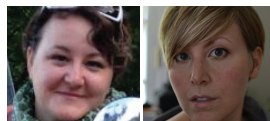
This presentation will highlight the implementation of Project-Based Language Learning in the Portuguese L2 classroom and beyond, in a project that connects learners from different parts of the world in building literacy skills. This interactive session will encourage attendees to discuss and explore driving questions and project ideas.

Be a PBL Allstar: Autonomy, Authority, Audience, Assessment, Authenticity

Sun, 11/20: 8:40 AM - 9:00 AM | Boston Conv. & Exhibition Center | Room 158

Barbara Bird | Daniela Busciglio

This session proposes strategies for success for each of five key issues in implementing Project-Based Language Learning, with the goal of empowering teachers, both novice and experienced, to navigate challenges or uncertainties in PBL. Presented during ACTFL Paper Presentations on High Levels of Achievement.



Interested in learning more? Come meet Barbara & Daniela on Sat. 2:00-3:00 pm, at the NFLRC Booth (2528)

Free Innovative Technology Tools from the Language Resource Centers

Sun, 11/20: 10:00 AM - 11:00 AM | Boston Conv. & Exhibition Center | Room 205B

William Nichols | Carl Blyth | Julio Rodriguez | Chantelle Warner

This panel will bring together four Title VI Language Resource Centers to showcase free technology projects with a live demonstration. The tools will address various areas of interest to K-16 language instructors including professional development, project-based learning, cultural literacy, reading proficiency, and online education.

Interested in PBL? Come meet Rachel on Saturday, 9:30-11:30 am at the NFLRC Booth (2528)



Special Interest Group (SIG) for PBL

If you are an ACTFL member interested in Project-Based Language Learning (PBL), please support the creation of a new ACTFL PBL Special Interest Group.

<http://nflrc.hawaii.edu/about/12/>



DON'T MISS THE BOAT!

Subscribe to the NFLRC news

Get announcements and reminders on NFLRC publications, professional learning opportunities, news, and more.

<http://nflrc.hawaii.edu/about/11/>



National Foreign Language Resource Center
nflrc.hawaii.edu



UNIVERSITY
of HAWAII
MĀNOA